

whitecliffscountry

DEAL • DOVER • SANDWICH

2021 GUIDE



visit
discover
explore

escape the everyday

contents

Welcome.....	1
10 good reasons to visit.....	2
Perfect accommodation.....	4
48 hours.....	6
Spectacular coastline.....	8
Adventures on water, land & air....	10
Stunning countryside.....	12
Nature lovers.....	14
Walking.....	16
Cycling.....	18
Blooming gardens & parks.....	20
Creative experiences.....	22
Out of this world.....	24
Kent's golf coast.....	26
So much to do with the kids.....	28
Magnificent castles & forts.....	30
Maritime history.....	32
Best kept secrets.....	34
Easting in or out.....	36
Drink and be merry.....	38
Entertainment.....	40
Deal.....	42
Dover.....	44
Sandwich.....	46
VIC Information.....	48
How to get here.....	49
Maps.....	50



'Fight or Flight' by Sue Dixon LRPS
 Photographed in Kearsney Parks, Dover
 Gold Medal and Raymond Wallace Thompson Trophy,
 Royal Photographic Society Annual Projected Image
 Competition 2018

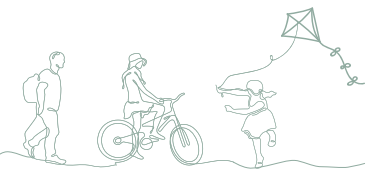
**Photographs throughout this publication
 have been kindly supplied by:**

Abbots Cliff House
 Adam Creswell
 Battle of Britain Memorial
 Betteshanger Parks
 Brambles B&B
 CHALKUP21
 Channel Gliding Club
 Clare Limbrey
 David Young (Sustrans)
 Dawn Bogue
 Derek Walker
 Dover District Council
 Dover Museum
 Dover Sea Safari
 East Kent Railway
 English Heritage
 Explore Kent
 Fallow Fields Camping
 Frog & Scot
 Get Lost Escape Rooms
 James Kirby
 Jon Peters - White Horse Inn
 Linden Hall Studio
 Malcolm Fairman
 Marquis of Granby
 Mikes Bikes Cycle Hire
 Narisse Tait
 Natalie Limbrey
 National Trust
 Nigel Green
 Paul Wells
 Peter Smith Photography
 Sally Lewis
 Sue Dixon
 The Bay Trust
 The Dog at Witham
 The Freed Man Micropub
 The History Project
 The Wild Kitchen, Deal
 The VRVE
 Visit Kent
 White Cliffs Countryside Partnership



*This publication was
 designed and produced
 by Dover District Council,
 Creative Design and Tourism
 Departments.*

welcome



**Welcome to White Cliffs Country,
 a unique destination where coast
 meets countryside, ancient meets
 modern, relaxation meets adventure,
 and England meets Europe.**

The world-famous White Cliffs together with miles of spectacular coastline and beautiful bordering countryside offer unrivalled opportunities to escape the everyday - from white knuckle boat rides to watersports to wildlife-spotting - and a range of outdoor activities to awaken your senses from sailing, walking and cycling to challenging links golf, geocaching and more.

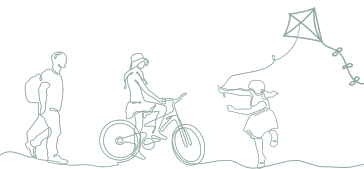
White Cliffs Country's heritage trail is awe-inspiring with ancient castles, historical landmarks, medieval buildings, diverse museums and countless hidden gems offering you a journey into the past that's awaiting your discovery.

The characterful towns and quaint villages of White Cliffs Country provide a picture-perfect backdrop to your getaway - packed with independent shops, bespoke theatres, original cinemas, charming restaurants and quirky places to stay. This is a destination not to be missed.

Make your stay more than a day, share your unique experiences and understand why White Cliffs Country is somewhere you'll want to come back to - again and again.

**ESCAPE THE EVERYDAY
 IN WHITE CLIFFS COUNTRY**

10 good reasons to visit



WORLD-FAMOUS
WHITE CLIFFS OF DOVER



IMPRESSIVE HISTORY
AND HERITAGE



STUNNING COAST AND
BEAUTIFUL COUNTRYSIDE

1. WORLD-FAMOUS WHITE CLIFFS OF DOVER

Enjoy spectacular views on an exhilarating cliff-top walk on the world-famous White Cliffs. The cliff face reaches up to 300 feet and the cliffs stretch for about 16 miles. On a clear day you can spot the French coast!

2. IMPRESSIVE HISTORY AND HERITAGE

Immerse yourself in 2000 years of history at Dover Castle, see the world's oldest surviving sea-going vessel, the Bronze Age Boat at Dover Museum or visit South Foreland Lighthouse, a striking Victorian landmark on the White Cliffs of Dover, which was the first to display an electrically powered signal.

3. STUNNING COAST

Cast your cares away and embrace coastal living! Being by the sea promotes a feeling of relaxation - have you noticed you sleep soundly after a day on the beach? It's the sea air! Enjoy our beautiful bays and beaches, our coastal walks, our unique piers, fishing boats, yachts in the marina, our nautical towns with smugglers' alleyways.

4. BEAUTIFUL COUNTRYSIDE

Bordering our striking coastline, the stunning open countryside is peppered with picturesque villages, ancient churches and postcard-worthy views. Stop to learn something new about the rural past of this area - you'll find information on display revealing the historical origins of these quintessential beauty spots.



PERFECT PLACE FOR
WALKING AND CYCLING



EXHILARATING COASTAL
ACTIVITIES AND OUTDOOR
PURSUITS

5. THE PERFECT PLACE FOR WALKING AND CYCLING

Whether an experienced walker or casual rambler, join a guided tour or independently explore miles of marked walking routes and themed trails. There is also a huge variety of cycle routes and trails; hire a bike or bring your own and discover the countryside on two wheels!

6. EXHILARATING COASTAL ACTIVITIES AND OUTDOOR PURSUITS

White Cliffs Country is totally geared up for outdoor lovers so take advantage of its miles of diverse and unspoilt coastline. Play a round of golf at one of the challenging Championship courses or try a wide range of water-based activities around the district.

7. CULINARY DELIGHTS

From cosy village pubs, festival street food to gourmet restaurants, there's something for everyone's tastes in White Cliffs Country. It would be a culinary crime not to visit Sandwich, next to the hamlet of Ham. Did you know... the word "sandwich" for an item of food was probably named after John Montagu, the 4th Earl of Sandwich, who to avoid interrupting a gambling game, asked for meat to be served between slices of bread?

8. QUIRKY HIDDEN GEMS

Discover one of the many hidden gems in White Cliffs Country. Why not take a tour of Sandwich Guildhall, built in the reign of Elizabeth I or see a fantastic range of maritime exhibits at Deal Museum? Dover's Roman Painted House or Transport Museum may also take your fancy.

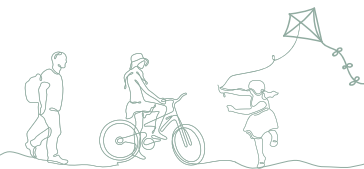
9. RELAX WITH SOME RETAIL THERAPY!

The new St James Retail & Leisure Park in Dover offers a good choice of shops alongside restaurants, cafes and a multiplex cinema. Just a short walk away is De Bradelei Wharf in a beautiful marina setting. You'll find a wealth of independent quirky shops and art galleries for that perfect gift in the town of Deal, and medieval Sandwich should also not be missed!

10. STAY A LITTLE LONGER

With so much to do in White Cliffs Country you'll want to make the most of your time here and extend your visit beyond a day. Whether you're planning a weekend escape, a mid-week getaway or a longer staycation, you'll find a huge variety of accommodation to suit all tastes and budgets.

perfect accommodation



From cosy self-catering cottages, quirky shepherds' huts and glamping pods to traditional bed and breakfasts, boutique and luxury hotels – you'll be spoilt for choice for places to stay with personality in White Cliffs Country.

Wherever you decide to stay, you'll find local charm abounds and there's always a warm welcome in White Cliffs Country.

All accommodation featured on our website has either been certified by a recognised external agency (such as Visit England; the AA or a signatory of the White Cliffs Country Accommodation Charter).

PET FRIENDLY

If you're visiting White Cliffs Country with four-legged furry friends, make sure to check out the pet-friendly page on our website at www.whitecliffscountry.org.uk for places to stay and visit.

FURTHER INFORMATION

Full accommodation details can be found on our website at: whitecliffscountry.org.uk/stay

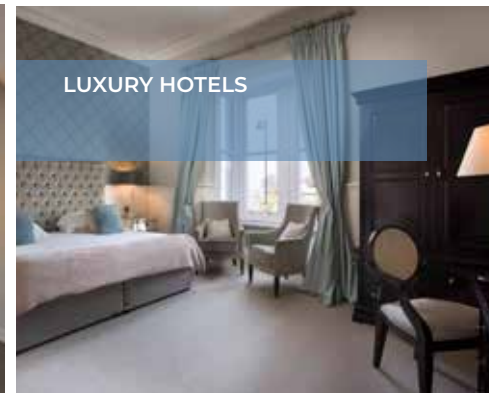
Don't forget to take a look around the site for more ideas on how to make your visit even more special!

You can also find and reserve guest houses, hotels and historic inns offering you a range of town, rural and urban settings at: stayindover.co.uk

BOUTIQUE HOTELS



LUXURY HOTELS



CAMPING, GLAMPING AND QUIRKY



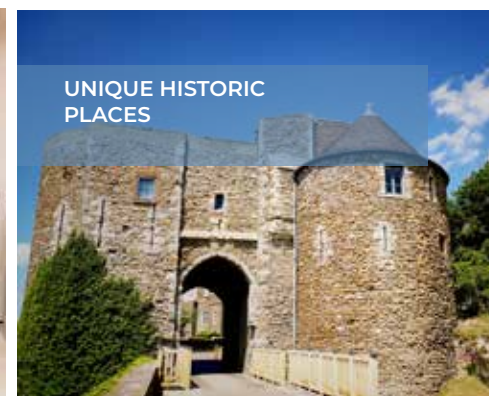
BED AND BREAKFAST



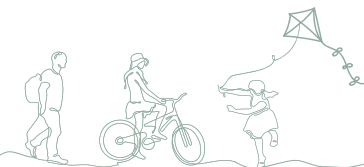
SELF-CATERING



UNIQUE HISTORIC PLACES



48 hours



Try our whistle-stop Two-Day Dash of White Cliffs Country - it will leave you keen to come back for longer!



DAY ONE

Immerse yourself in history at Dover Castle and experience the royal court of Henry II or travel deep into the White Cliffs and visit the newly refurbished Wartime Tunnels. After a spot of lunch, take advantage of a free guided walk and explore one of our many walks and trails with a volunteer greeter.

For the more adventurous, take to the water. Try water activities or see the sights of Dover from a boat. At the end of your busy day, try one of our great places to eat and relax, with a great range of locally sourced produce, you won't be disappointed.

DAY TWO

Soak up some café culture and shopping in Deal. The colourful seafront plays host to a wide choice of excellent pubs and restaurants. Wander through the award-winning High Street and explore fantastic small, independent shops and delicatessens, which rival The Brighton Lanes!

Head along to Sandwich and discover one of the most intact, historic medieval towns in the country. Take a tour of the 16th century Guildhall or follow the town trail, much of it runs alongside the River Stour. From here you can take the River Bus and see the seals or join in with a workshop at the Medieval Centre.

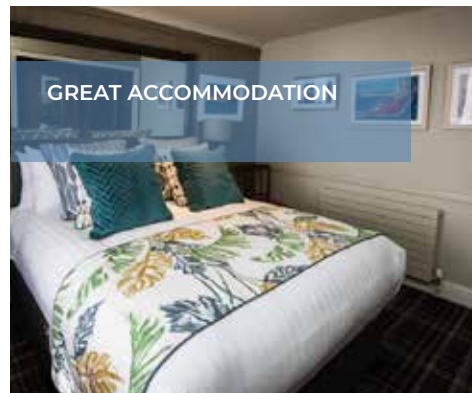
WATER SPORTS



INDEPENDENT SHOPS



GREAT ACCOMMODATION



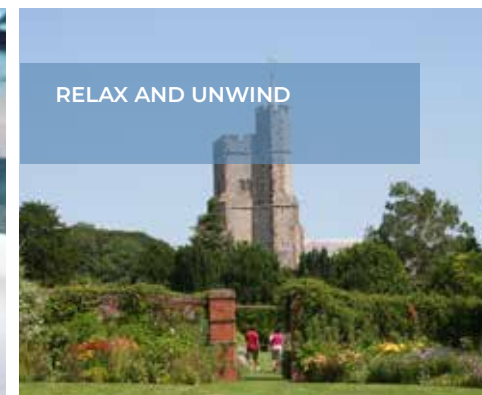
WILDLIFE SPOTTING



EATING OUT IN STYLE



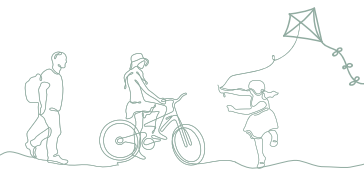
RELAX AND UNWIND



Haven't found time to fit it all in...? ...then stay a little longer!

ESCAPE THE EVERYDAY IN WHITE CLIFFS COUNTRY

spectacular coastline



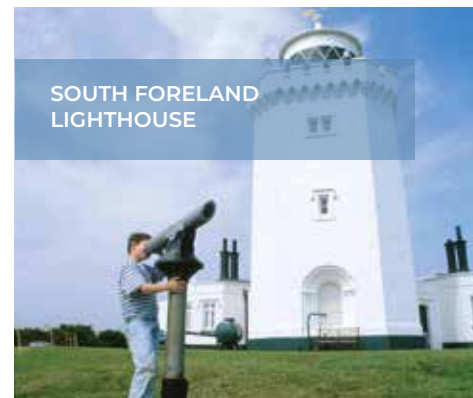
From the iconic white cliffs, fishing boats pulled up on to shingle beaches, to the dog friendly sands of Sandwich Bay, we have it all in White Cliffs Country.

OUR DIVERSE COAST

Come and experience our wonderful coastline. With fantastic views, enjoy a walk along one of the many beaches or get up close to nature at Samphire Hoe. Made from the material dug to create the Channel Tunnel, it's a stunning location with wildflowers, birds and peace and quiet. Follow Kent's ancient coastline and walk the Saxon Shore Way – whatever you choose to do, you'll be spoilt for choice!



BATTLE OF BRITAIN
MEMORIAL



SOUTH FORELAND
LIGHTHOUSE



KINGSDOWN BEACH



DEAL BOATS

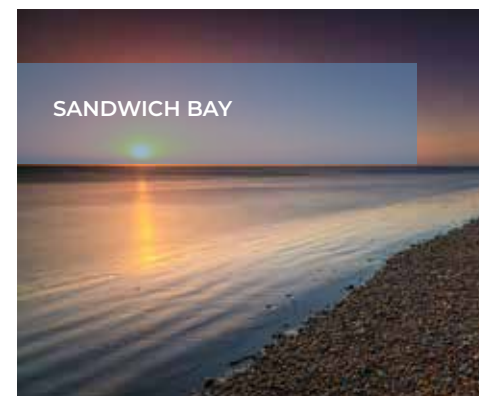
OUR COASTAL VILLAGES

On our south east coast, with panoramic views of the English Channel, sits the clifftop village of Capel-le-Ferne, home to the poignant Battle of Britain Memorial. This exquisitely designed "National Memorial to the Few" offers the not-to-be-missed Scramble Experience.

To the east of Dover, visit the beautiful village of St Margaret's-at-Cliffe. Paddle in the sea at the bay or take a fantastic walk along the coastal path on the world-famous White Cliffs of Dover to South Foreland Lighthouse for breath taking vistas and afternoon tea. The village has been home to some famous faces including Noel Coward and James Bond novelist, Ian Fleming. Fleming's book, Moonraker, is largely based in St Margaret's and nearby Kingsdown.

From South Foreland Lighthouse head along the cliff-top path to the village of Kingsdown and stop for a drink or a bite to eat at the Zetland Arms, located on the beach.

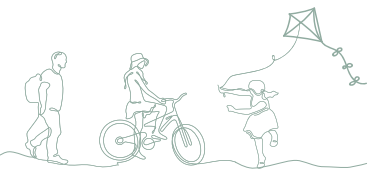
Continue up the coast to Walmer, passing fishing boats pulled up on the shingle beach and wander out onto the pier at Deal before heading north to the sands of Sandwich Bay with its famous links golf courses and dog-friendly beaches.



SANDWICH BAY

adventures on water...

...land and air



Do something different in White Cliffs Country and explore miles of iconic coastline! From the thrill of a speedboat ride beneath the cliffs to gliding above them, you can forge your own adventure - on sea, land or in the air.

DOVER SEA SAFARI

Take advantage of our wonderful coastline on an exhilarating tour on a speedboat with Dover Sea Safari. Choose from a variety of trips including their popular two hour Secret Seal Safari!



WETWHEELS

Enjoy a thrilling ride aboard the only high-speed catamaran in the South East. Wetwheels has been designed and built to get all ages and abilities out on the water and is 100% accessible.

SANDWICH RIVER BUS AND SEAL SPOTTING TRIPS

Spot seals and wildlife in their natural environment on a two-hour cruise with Sandwich River Bus or take a one-hour river tour to Richborough Roman Fort.

ROYAL CINQUE PORTS YACHT CLUB

This offers sailing tasters and yacht sailing courses through its RYA Training Centre, perfectly located on Dover's seafront.

DOVER SEA SPORTS CENTRE

There's an exciting range of activities and courses available at Dover Sea Sports Centre. Learn to windsurf, try a dinghy sailing or paddleboard course - from beginner to advanced there's an activity for you.

FISHING

If you fancy trying a spot of sea fishing, step aboard a charter fishing vessel operating from Dover Marina or wander out onto Deal Pier and cast off.

SWIMMING

Take a refreshing dip in the water - famous throughout the world as the starting point for adventurous swimmers to begin their cross-channel swimming attempt.

BETTESHANGER ORIENTEERING



CLAY PIGEON SHOOTING



BETTESHANGER PARK

Come along to Betteshanger Park and go on a geocaching treasure hunt or try one of the four orienteering courses. Let the kids run off a bit of steam in the play area equipped with rope walks, cradle swings, slides, see-saws and more!

CLAY PIGEON SHOOTING

Ever wanted to try clay pigeon shooting? Then head to Martin Gorse Wood Clay Pigeon Club. The small friendly club situated between Dover and Deal welcomes everyone, of all ages and experience.

LYDDEN HILL RACE CIRCUIT



GLIDING



LYDDEN HILL RACE CIRCUIT

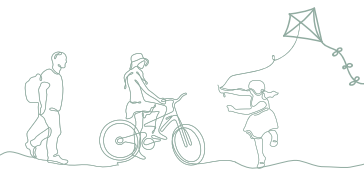
See regular motorsport events held throughout the year at Lydden Hill Race Circuit - the 'Home of Rallycross'. Bring your car or bike along to one of their Track Days. Designed to be fun, track days are ideal to learn more about your vehicle in a safe environment.

GLIDING

Situated in beautiful countryside, within the Earl of Guildford's Waldershare Park is the Channel Gliding Club. The club has three two-seater gliders and a single seater for more advanced solo flying. Trial lessons are available for those just wanting to see what gliding is about.

ESCAPE THE EVERYDAY IN WHITE CLIFFS COUNTRY

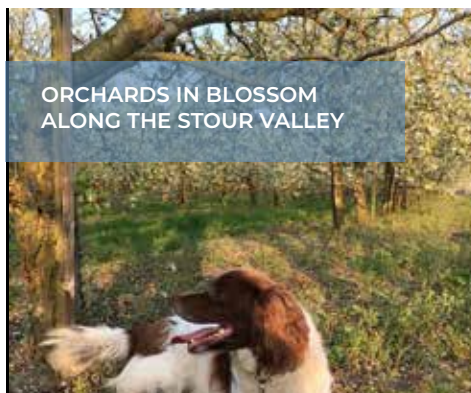
stunning countryside



We are best known for our coastal areas and the famous White Cliffs but travel just a few miles inland and you will discover the beauty of Kent's North Downs (AONB) and surrounding countryside.

OUR GREEN AND PLEASANT LAND!

22% of White Cliffs Country is an Area of Outstanding Natural Beauty, making it the perfect place to come and explore. With wonderful views and tranquil countryside enjoy a refreshing walk, take a bike ride through quiet country lanes or discover a wealth of history as you meander through our picturesque villages.



ORCHARDS IN BLOSSOM
ALONG THE STOUR VALLEY



TEMPLE EWELL



COLDRED



WINGHAM



GOODNESTONE

OUR RURAL VILLAGES

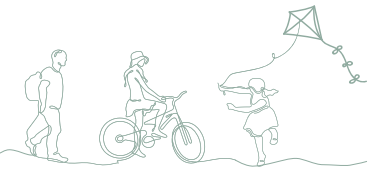
Temple Ewell is situated in the Dour valley and was first mentioned in a charter of c.772. In the village of Shepherdswell there are two fine old yew trees in the churchyard which are thought to be around 1,000 years old and from here you can step back in time with East Kent Railway on a heritage train ride.

Coldred is one of the highest places in East Kent, nearly 400ft above sea level. The cottages and pub around the village green date from the early 17th century. Take a stroll through the Alkham Valley, within the Kent Downs Area of Outstanding Natural Beauty, with unique chalk downland and ancient woodlands.

Goodnestone, locally pronounced as 'Gunston', has a connection through its prestigious stately home and park to Jane Austen. Eastry once boasted a Royal Palace for the Kings of Kent, as early as 660 AD, and Wingham has several half-timbered houses in the high street which are over 500 years old. Close by is the Parish of Ash which retains eleven of its twelve original manor houses.

Find out more about the history of our villages by following a village trail or download a copy of the village trail leaflet from our website.

nature lovers



Go rock pooling along our coast, pond dipping in our parks, take a boat trip or climb up on to our unique chalk Downs.

This is a diverse and wonderful area for all who love and appreciate nature.

SAMPHIRE HOE

Get up close to nature with a visit to Samphire Hoe. Samphire Hoe was made from the material dug to create the Channel Tunnel and is a stunning location with wildflowers and birds, as well as peace and quiet. Warm up after a winter walk or cool off from the long summer days with refreshments at the tea kiosk (open every weekend of the year and most days from Easter to September).

NATURE RESERVES

We have wildlife in abundance in White Cliffs Country. Why not book a wildlife tour, a seal spotting trip from Sandwich Quay or visit one of our many nature reserves?

Chalk grassland is only found in north-west Europe, and a significant proportion of this is in southern England. Wildflower meadows on chalk grassland are sometimes called Europe's tropical rainforest. Up to 40 species of flowering plants can be found in one square metre.

A good place to see the wildflowers and butterflies of ancient chalk grassland is at Whinless Down Nature Reserve.



SEAL SPOTTING



ADONIS BLUE BUTTERFLY

WHITE CLIFFS COUNTRYSIDE PARTNERSHIP NATURE EVENTS

Join the White Cliffs Countryside Partnership on one of their many nature events from rock pooling to mini beast safaris.

ST MARGARET'S BAY

St Margaret's Bay is a fantastic place for rock pooling - a great way to discover the marine wildlife that exists along our coastline.

SANDWICH BAY BIRD OBSERVATORY

Birdlife thrives in this diverse landscape - listen for the call of the terns and the oyster catcher. The egret has become a common



ROCK POOLING
ST MARGARET'S BAY



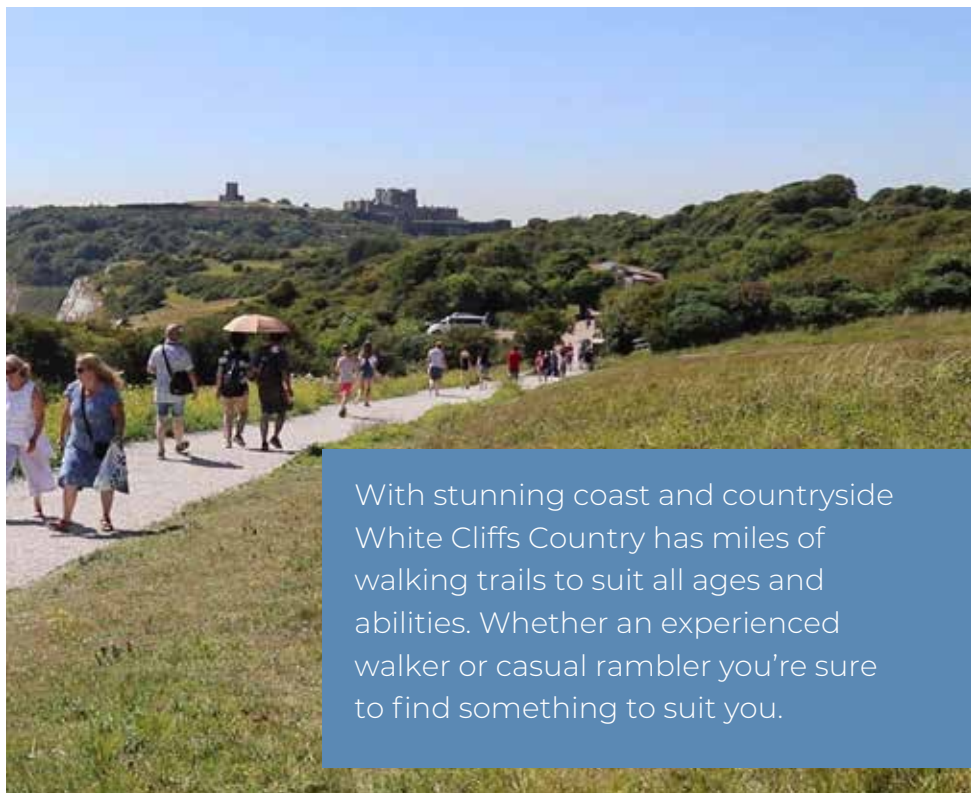
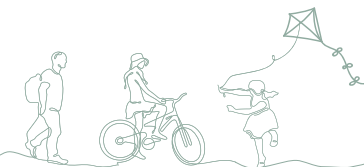
WESTERN HEIGHTS
NATURE RESERVE

sight on our marshes and buzzards can be seen catching the wind above our woodland. Sandwich Bay Bird Observatory holds open days and talks.

WESTERN HEIGHTS NATURE RESERVE

With fantastic views over the English Channel and the spectacular White Cliffs of Dover, the Western Heights Nature Reserve is a great place to see natural flora and fauna. Come and discover the wildlife and history of the area on one of the three waymarked walking routes.

walking



With stunning coast and countryside White Cliffs Country has miles of walking trails to suit all ages and abilities. Whether an experienced walker or casual rambler you're sure to find something to suit you.

WHITE CLIFFS

A must for all walkers is a cliff-top walk along the iconic White Cliffs of Dover to St Margaret's. Natural England is establishing a 2,700 mile path around the entire English coastline and the England Coast Path on the White Cliffs of Dover was the first section to be opened in South East England.

WALKING THE DOG

Four-legged friends are welcome – well, it's their holiday too! You'll find some great places to walk your dog, from wide open countryside, wild beaches, parks, village trails and more. Discover great dog-friendly places to stay and visit by following ernies-adventures.com – Ruff Guide to Dover, Deal and Sandwich.

DOVER'S BLUEBIRD HERITAGE TRAIL

Follow the self-guided Bluebird Heritage Trail around Dover. Marked by distinctive bronze pavement markers, the trail links 31 of Dover's historic buildings, sites and monuments.

DOVER TOTEMS

'Dover Totems' mark the pathway from Athol Terrace up to the White Cliffs of Dover. The totems have been inspired by the shape of lighthouses with patterns and images decorating the totems.

WHITE CLIFFS WALKING FESTIVAL

This week-long festival with over 40 walks ranging from 1 to 50 miles has a huge variety of walks to suit all abilities and interests.

WALKING THE DOG



DOVER TOTEMS



CHALKUP21 ART & ARCHITECTURE TRAIL



WHITE CLIFFS WALKING FESTIVAL



CHALKUP21 ART & ARCHITECTURE TRAIL

Discover 21st century art and architecture with this 17-mile trail. Stretching from 'The Wing' at Capel-le-Ferne to Deal Pier, it includes fine examples of coastal architecture.

SANDWICH ROPE WALK

Walk around the medieval town of Sandwich, following the old town wall along the Ropewalk. This was once used for ships' rope-making which required a long, straight stretch for 'walking out'.

HISTORIC TOWN & VILLAGE TRAILS

Discover the history and heritage of our unique towns and villages by following the Historic Town and Village Trails.

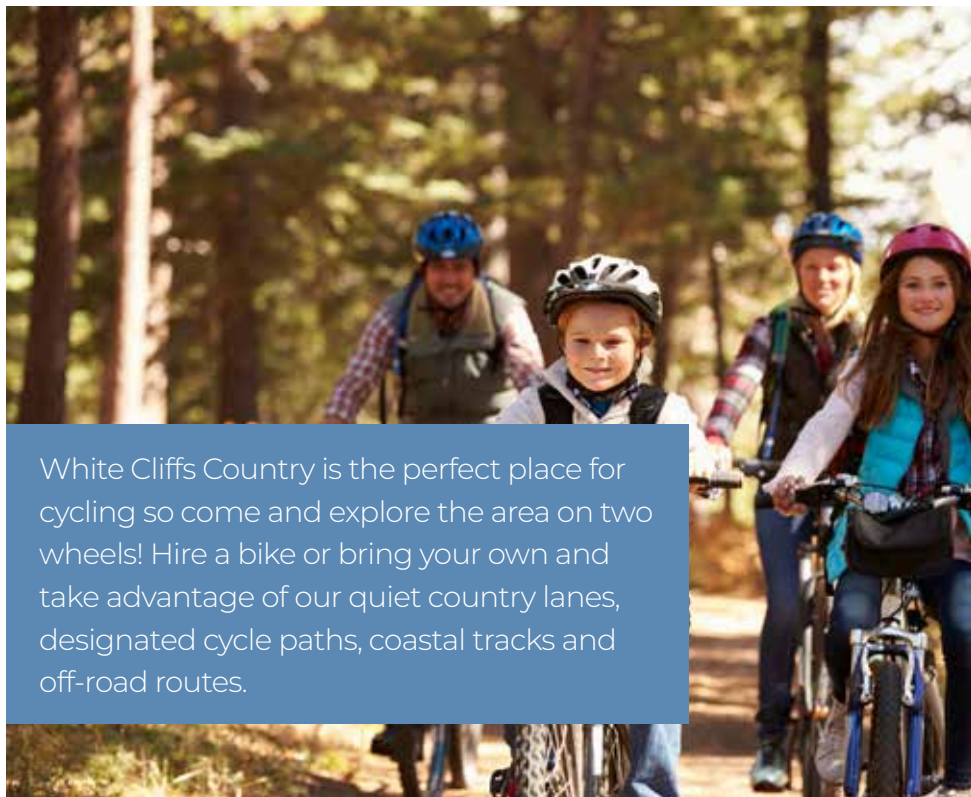
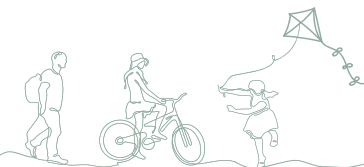
WAYMARKED WALKING TRAILS

Put your boots on and explore miles of marked walking and themed trails:

- Frontline Britain Trail
- Cliff-top Walks
- Samphire Hoe
- Miners' Way
- Stour Valley Way
- The North Downs Way
- Saxon Shore Way
- Dover's Bluebird Heritage Trail
- England Coast Path
- Royal Marines Heritage Trail - Deal
- Dover Totems - White Cliffs

Discover more and pick up or download the White Cliffs Country walking and cycling guide.

cycling



White Cliffs Country is the perfect place for cycling so come and explore the area on two wheels! Hire a bike or bring your own and take advantage of our quiet country lanes, designated cycle paths, coastal tracks and off-road routes.

SAFE AND OFF-ROAD

Betteshanger Park has a smooth 3km tarmac track, with a fast lane, providing safe, traffic-free cycling. There is also 10km of rugged mountain bike trails running throughout the Park.

Designed with varying difficulty and for different abilities, they are perfect for both beginners and those with off-road experience.

LE TOUR DE SANDWICH

Held in June as part of Le Weekend, this popular event, starting and finishing in Sandwich, offers a choice of three distances from 50km to 100km through beautiful Kent countryside.



LE TOUR DE SANDWICH



KENT COASTAL CASTLES RIDE



BETTESHANGER PARK



CYCLE HIRE

WAYMARKED CYCLE ROUTES

Whatever your ability take life at a slower pace and pedal one of the many waymarked routes:

National Cycle Route 1 (NCR1)

Starting in Dover, follow the route along the coast to Kingsdown and on to Deal passing both Walmer and Deal Castle. From Deal the route goes past Deal Pier and the Timeball Tower then inland on to Sandwich.

The Sandwich Way – Route 15

Starting at Dover seafront, this route takes you through beautiful rolling countryside, past ancient churches and villages on to the historic town of Sandwich.

Cathedral to Coast – Routes 16 and 17

Cycle through stunning East Kent countryside on this 50 mile circular ride. The route takes you along regional routes 16 and 17 which link Dover, Canterbury and Folkestone.

LOCAL COUNTRYSIDE ROUTES

For great views of open countryside, woods and hedgerows follow the Skylark Trail or explore the beautiful lower slopes of the North Downs between Deal and Shepherdswell on the Miner's Way Cycle Trail.

The Skylark Trail

With great views of open countryside, the route starting from Walmer station takes you through the small villages of Guston and East Langdon and along country roads on to Dover.

The Miners' Cycle Trail

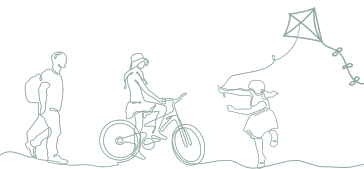
This 30-mile cycle trail goes through beautiful countryside linking the former mining villages of East Kent.

CYCLE HIRE

If you want to hire a bike in White Cliffs Country, there are a number of cycle hire shops to choose from - for more information visit our website.

Discover more and pick up or download the White Cliffs Country walking and cycling guide.

blooming gardens and parks



In White Cliffs Country we are proud to have a wonderfully varied selection of both formal gardens and public parks.

Relax in the beautiful formal gardens of Walmer Castle and Goodnestone Park or discover The Pines Garden in St Margaret's. Picnic at Kearsney Parks in Dover where there are a variety of outdoor family activities throughout the year.

WALMER CASTLE GARDENS

Enjoy the tranquil setting of the Queen Mother's Garden as she did while here at Walmer Castle. This contemporary garden was created in honour of her 95th birthday. Explore the mature trees of the woodland walk. On the Oval Lawn, take time to read a book, or play with the new giant garden games in the summer.

GOODNESTONE PARK GARDENS

Considered to be one of the best gardens in the South East with walled garden, arboretum, gravel garden, woodland and a large selection of roses and herbaceous plants. Goodnestone Park also has connections to Jane Austen who was a frequent visitor.

SANDOWN CASTLE COMMUNITY GARDEN

This beautiful community garden stands in the ruins of Sandown Castle, one of the three castles built on the orders of Henry VIII to guard the sea off Deal. The garden makes for a great spot to relax.



WALMER CASTLE GARDENS

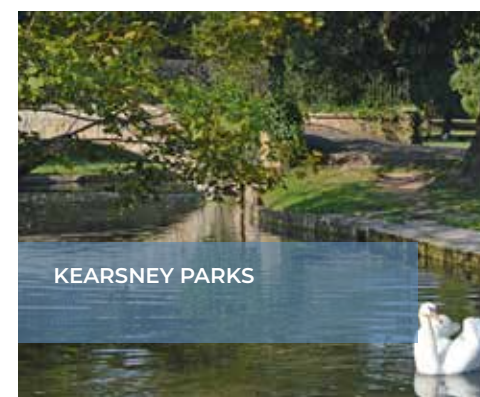


THE PINES GARDEN

THE PINES GARDEN, MUSEUM AND TEAROOM

These beautiful, organically managed gardens are situated behind the White Cliffs and take in six acres of unusual and mature trees and shrubs; kitchen gardens (which also supply the tearoom); a lake; grass labyrinth and statue of Sir Winston Churchill by the acclaimed sculptor Oscar Nemon.

Visit the adjacent local history museum to learn more about Noel Coward and Ian Fleming – both former residents of St Margaret's. The tearoom serves a range of delicious wholesome light meals, mouthwatering cakes, cream teas, hot and cold drinks, which can be enjoyed in the beauty of the outdoors.



KEARSNEY PARKS

KEARSNEY PARKS

Just on the outskirts of Dover, Kearsney Abbey's picturesque gardens are laid out as informal parkland and you can enjoy a walk or relax watching the wildlife on the lake, all year round.

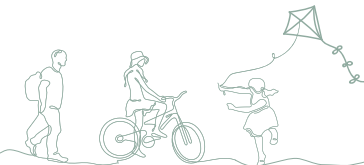
Over the road you'll find the Grade II listed Russell Gardens, designed by the renowned Edwardian landscape architect Thomas H. Mawson (1861-1933) and presented in a more formal style.

Kearsney Parks were restored in 2020 with a £3m investment from the National Lottery Heritage Fund and National Lottery Community Fund. Renovated and revamped to offer a wonderful and well-resourced outdoor space for everyone, facilities include a new café, children's play area and Changing Places restroom.

OPEN GARDEN EVENTS

You've a unique opportunity to enjoy a more intimate garden experience when White Cliffs Country residents open their gardens to the public through the National Garden Scheme and The Little Gardens of Sandwich event.

creative experiences



Our beautiful coastline and stunning countryside have been inspiring writers and artists for centuries.

Find out why!



GALLERIES & SHOPS

We have a host of galleries in White Cliffs Country. Seaward Gallery on Deal seafront exhibits paintings by Penny Bearman. Formerly a chapel, Linden Hall Studio has space over two floors for artists to exhibit their work. Boasting a 'punk rock' ethic DONT WALK WALK Gallery offers something a little different. Opened in 2017 is Will and Yates, an art gallery and home store, with original paintings, ceramics and new decorative pieces. Many of the galleries hold regular exhibitions.

White Cliffs Country has a number of independent shops selling a range of arts and crafts, unique gifts and jewellery.

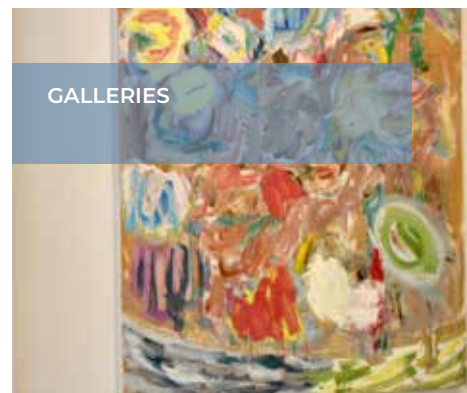
ANTIQUE FAIRS

Look out for the antique fairs in White Cliffs Country. Walmer Brocante, an antique and collectables fair, is held on Walmer Green over the May Bank Holiday weekend. Held in the high street in Deal is the annual Braderie in September with antiques, collectables, jewellery, crafts and lots more.

WORKSHOPS

Create that special gift. Learn new techniques and skills to design and make your own jewellery. Hazeedaze gift and bead shop in Sandwich offers Bead Weaving Classes and at Rees and Rees in Deal you can take part in a jewellery course or workshop.

GALLERIES



WORKSHOPS



CHEQUERS KITCHEN

Book yourself onto a cookery class at Chequers Kitchen in Deal. From artisan bread-making to a fish masterclass or baking mornings for the children, there's a wide variety of cookery courses and workshops in their fully equipped teaching kitchen. Whether an accomplished cook or a beginner you're sure to find something to suit you.

THE WILD KITCHEN



COCKTAILS



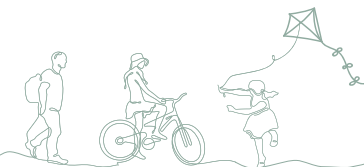
THE WILD KITCHEN

Adventure into the Kent landscape on a forage and feast course with The Wild Kitchen. Find fresh shellfish, edible seaweed and lots of other delicious food in secret places, learn how best to cook them and enjoy a wild gourmet lunch.

COCKTAIL MASTERCLASS

Whether you like it shaken or stirred, visit The Lane in Deal. You can even book a fun-packed cocktail masterclass here!

out of this world



Looking for an action-packed stay in White Cliffs Country? Whether its an exciting coastal tour or becoming a zoo keeper for a day, there's plenty of new experiences and activities on offer in White Cliffs Country.

VRVE

The virtual reality centre in Dover offers a fun and immersive experience for all ages. With its cutting-edge VR technology, the studio provides a fantastic virtual reality experience.

THE BUNKER ESCAPE ROOM

Experience a brand-new escape room 'The Bunker' at Dover Castle. The fully immersive escape room is deep within the Secret Wartime Tunnels at the Castle. Against the clock you'll need to solve the clues, puzzles and challenges.

ESCAPE ROOMS

A fun and challenging experience for the whole family! Get Lost Escape Rooms in Dover offers you a variety of different-themed rooms from which you have 60 minutes to solve riddles, crack codes and ponder over puzzles – plus, of course, escape!

GAMEBASE

Love Dover's ultimate gaming arena, where you can play the latest video games solo or as a group on ultra 4K, 144hz esports monitors, comfy gaming chairs and super-fast leased line internet. Competitions and league events are also available.

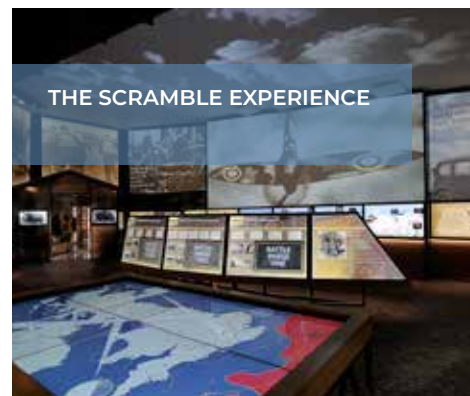
ESCAPE ROOMS



THE HISTORY PROJECT



THE SCRAMBLE EXPERIENCE



SANDWICH WILDLIFE PARK

Take a guided, small group tour of this revamped wildlife park or enjoy a close encounter of a different kind... ever heard of a cusimanse? You can book a meet and greet with one of these exotic animals or even a sloth, ring-tailed lemur and more!

The park has an outdoor play area, plus a coffee shop, with indoor and outdoor seating, serving barista brewed coffee by Lavazza as well as hot and cold foods.

THE HISTORY PROJECT

Uncover the history of Deal in a fun, interactive and entertaining way by joining George and Peter on a History Walking Tour. Topics include: Smugglers' Trail, Deal History Tour, Castles on the Coast and The Story of Deal's Piers Over The Years.

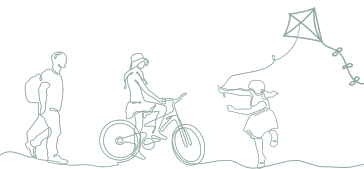
THE SCRAMBLE EXPERIENCE

Head back in time to a defining moment of the Second World War and imagine what it was like to be one of 'The Few'... can you? Situated within 'The Wing' at the Battle of Britain Memorial you'll discover the interactive Scramble Experience. This hands-on attraction uses audio-visual effects, a video wall and other special techniques to capture an impression of life for the pilots who took to the skies of Britain in the summer and early autumn of 1940. It brings to life the Battle of Britain.

THE DROP REDOUBT & GRAND SHAFT OPEN WEEKENDS

Every year the Western Heights Preservation Society host two open weekends from these impressive and important fortifications overlooking Dover. Explore the fort at your leisure and experience life as it may have been in Napoleonic times with re-enactments, period costumes, replica cannons and displays.

Kent's golf coast



White Cliffs Country is proud to host The 149th Open at Royal St George's Golf Club in Sandwich, from 11th to 18th July 2021.



THE 149TH OPEN

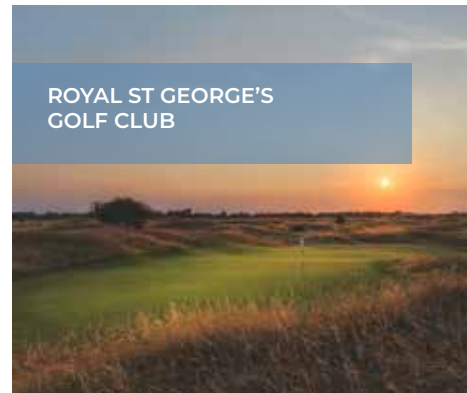
It will be the 15th time this world-class sporting event has been held at Royal St George's Golf Club and the 18th time The Open Championship has been held in White Cliffs Country. Played on links courses (areas of coastal sand dunes), The Open is the most historic competition in golf and draws the world's best players to compete for the famous Claret Jug.

Whether an amateur or professional, there are some fantastic courses in White Cliffs Country. We have a total of four stunning golf courses with breath-taking views out to the Channel and the countryside.

ROYAL ST GEORGE'S GOLF CLUB

Famed for its challenging 18 holes and located in a Site of Specific Scientific Interest, this is one of England's finest links golf courses. Set in 450 acres of stunning surroundings, golfers can enjoy the beauty of wildflowers on the dune grasses and incredible sea views. The traditional – and historic – clubhouse is the ideal venue from which to enjoy a fabulous lunch after a game.

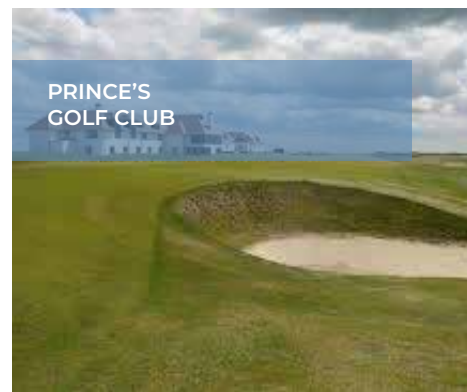
ROYAL ST GEORGE'S GOLF CLUB



WALMER & KINGSDOWN GOLF CLUB



PRINCE'S GOLF CLUB



ROYAL CINQUE PORTS GOLF CLUB



PRINCE'S GOLF CLUB

A classic 27-hole championship links course and host to The Open in 1932. This internationally renowned club welcomes visitors seven days a week. The Lodge offers 38 ensuite bedrooms overlooking the golf course and Sandwich Bay.

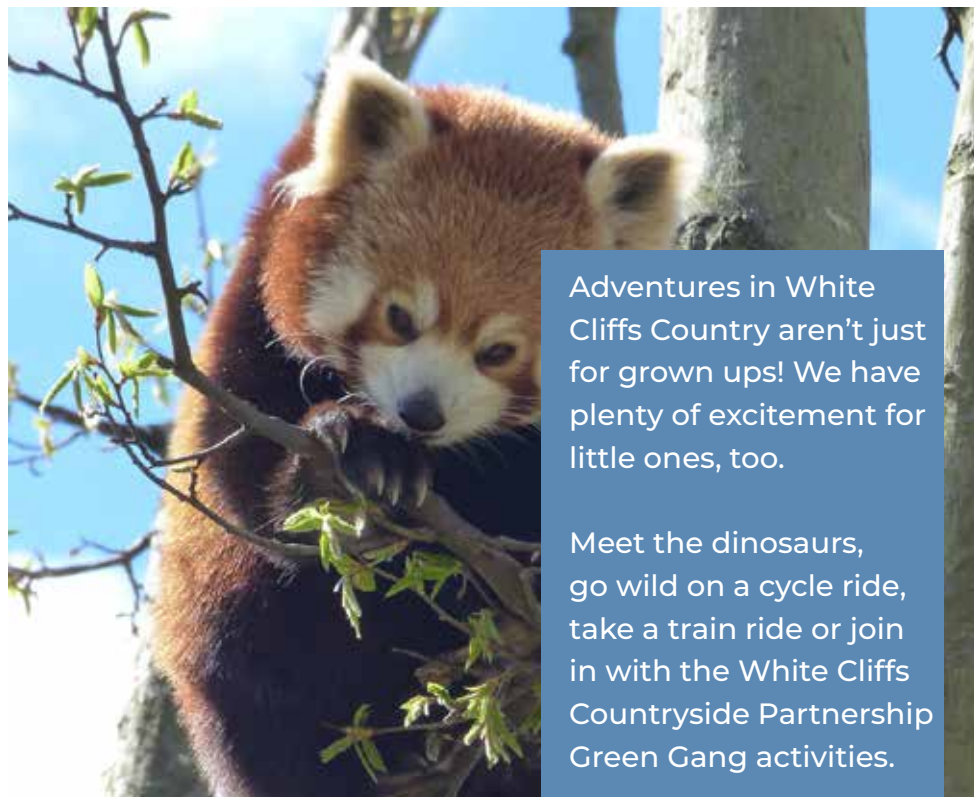
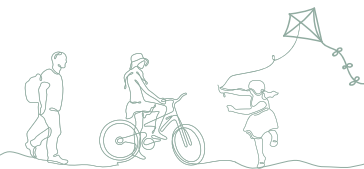
WALMER & KINGSDOWN GOLF CLUB

Perched on top of the world-famous White Cliffs of Dover, with sea views from every hole, the unique location of this beautiful course delivers stunning views across the English Channel to the coast of France. Walmer and Kingsdown is one of only a few courses in the world where golfers can see another country while enjoying a round.

ROYAL CINQUE PORTS GOLF CLUB

The well-presented playing surface at Deal is firm and undulating, challenging players' skills with steep bunkers and, of course, a sea breeze! With excellent practice facilities and said to be one of the finest links golf courses in the British Isles, Royal Cinque Ports hosted The Open in 1909 and 1920.

so much to do with the kids



Adventures in White Cliffs Country aren't just for grown ups! We have plenty of excitement for little ones, too.

Meet the dinosaurs, go wild on a cycle ride, take a train ride or join in with the White Cliffs Countryside Partnership Green Gang activities.

WINGHAM WILDLIFE PARK

Get up close and personal with a loveable lemur, otter or red panda on an Experience Day at Wingham Wildlife Park - Kent's fastest growing zoo. Shadow a Reptile Keeper or become a Keeper for the Day where you'll meet some of the animals and help with their feeding, all the while learning about the animals.

PARKS

Enjoy a family picnic in one of our beautiful parks. Kearsney Parks in Dover holds many family events including The Big Tree Climb.

Betteshanger Park offers plenty to keep the kids entertained. Bring your bikes along or hire them there and go on a family bike ride around the 250 acre park.

SWIMMING

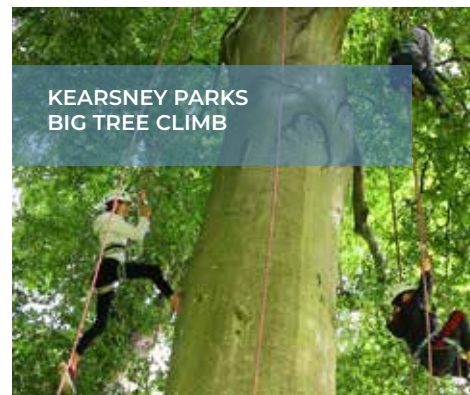
Take a dip in the sea or experience Tides Leisure Centre in Deal - an indoor leisure pool with wave machine and flumes. For the under 10's there is also Walmer's outdoor paddling pool.

DOVER DISTRICT LEISURE CENTRE

This exciting new leisure centre has a range of facilities including a county standard swimming pool, squash courts, health and fitness suite and a Clip 'n Climb climbing facility.

PLAYBASE

Based within Dover's Gamebase, this small soft play area is perfect for tots and toddlers. Booking is advised.



KEARSNEY PARKS
BIG TREE CLIMB



EAST KENT RAILWAY



OPEN FARM SUNDAY



CLIP 'N' CLIMB
DOVER DISTRICT LEISURE
CENTRE

BEACHES, PROMENADES & PIERS

From skimming stones to paddling in the water and soaking up stunning sea views, nothing beats the nostalgia of an escape to the coast. Relax on one of our many beaches or enjoy a stroll along the promenade. The picturesque panorama of Deal Seafront from the end of the pier has remained unspoilt for more than a hundred years. Wander along from Dover's Marine Parade to admire the contemporary Tonkin Liu Esplanade and watch the ships sailing in and out of this vibrant port.

EAST KENT RAILWAY

For a wonderful family day out, step back in time and enjoy a five mile round trip on heritage trains at East Kent Railway. Ride the miniature train, see the model railway and enjoy a stroll around the woodland.

OPEN FARM SUNDAY

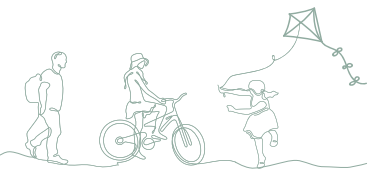
Look out for the Open Farm Sunday events taking place in June. At Solley's Farm in Ripple, near Deal, there will be tours of the dairy and the new nature trail. Goldstone Farm near Ash offers tractor rides around the orchards and you get to pet the bull!

HORSE RIDING

Visit one of the local equestrian centres and saddle up for a lesson or a hack across our beautiful countryside.

magnificent castles and

forts



No trip to White Cliffs Country is complete without visiting our magnificent castles and forts, a symbol of Britain's spirit of resistance to unwanted invasion. Historical re-enactments at these incredible fortifications bring the past to life.



DOVER CASTLE

Built in the 1180s by King Henry II and situated on top of the iconic White Cliffs of Dover. You can discover 2000 years of history. Immerse yourself in the royal court of King Henry II in the Great Tower or travel deep inside the White Cliffs to explore the atmospheric underground hospital within the Secret Wartime Tunnels.

DEAL CASTLE

For a fascinating day out on the Kent coast look no further. Built by the order of King Henry VIII it is one of the finest Tudor artillery castles in England. Come and explore the whole of the castle from the exciting dark passages to the first floor captain's residence.

WALMER CASTLE AND GARDENS

Built in 1540 as part of Henry VIII's chain of coastal defences, the castle has been transformed through centuries of domestic refinements into an elegant stately home. See the original boots of the Duke of Wellington, the reception rooms of HM Queen Elizabeth the Queen Mother and explore the magnificent gardens.

RICHBOROUGH ROMAN FORT

The impressive ruins of the Roman Township at Richborough mark the point from which the Romans launched their successful invasion of Britain in 43 AD. Extensive remains of the walls and defensive ditches can be seen.



DOVER CASTLE



WALMER CASTLE AND GARDENS



DEAL CASTLE



RICHBOROUGH ROMAN FORT

FORT BURGOWNE

In an elevated position overlooking Dover Castle, Fort Burgoyne was built in the 1860s to protect the stronghold.

To access the site, book onto a 'Discover Fort Burgoyne' guided walk, which provides an informative insight to the history of, and emerging plans for, the fort.

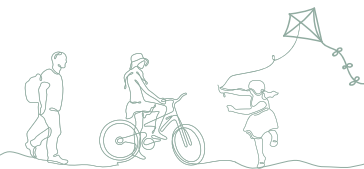
DROP REDOUBT

The Drop Redoubt is one of the two forts on Western Heights, Dover, and is linked to the other, the Citadel, by 'the lines'. It is a large and impressive fortress. Although not open to the public - special tours can be arranged and look out for the two Open Weekends!



FORT BURGOWNE

maritime history



The coastal locations of Dover, Deal and Sandwich have played an important role in the towns' rich and colourful histories. From the world's oldest surviving seagoing boat, to Cinque Port status, to a busy and thriving modern-day port – uncover the maritime significance of White Cliffs Country.



THE BRONZE AGE BOAT

Come and see the world's oldest surviving sea-going vessel at the Bronze Age Boat Gallery in Dover Museum. Discovered in 1992, just yards from where it is now displayed in its own gallery, the boat is thought to be some 3,500 years old.

CHANNEL CROSSING

Since the 1870s many brave and talented swimmers have succeeded in their attempts to swim the English Channel. In August 1875 Captain Matthew Webb became the first swimmer to successfully complete an unaided swim across the Channel taking 21 hours 45 minutes.

Born in 1919, Sam Ricketts was influential to Channel swimming. In 1950 Sam was

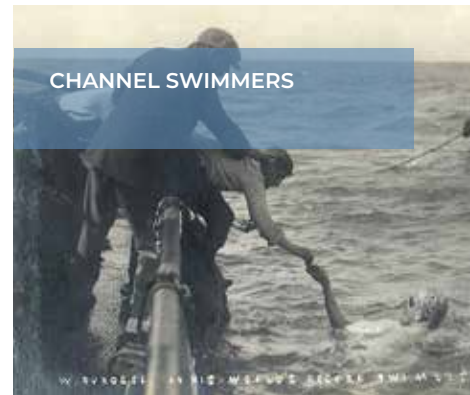
one of only nine swimmers to finish the First Daily Mail International Channel Race. He had decided to enter the race as a new challenge.

Published in 1956, Ricketts wrote the renowned book 'It's Cold in the Channel' based on his own channel swimming experiences.

CINQUE PORTS

The Confederation of the Cinque Ports (pronounced 'SINK') was formed in c.1050. The five original members were Hastings, Romney, Hythe, Dover and Sandwich who, in return for providing men and ships for 15 days free service a year to the Crown, received many rights and privileges.

CHANNEL SWIMMERS



SANDWICH QUAY



TIMEBALL TOWER MUSEUM

On Deal seafront is the working Timeball Tower Museum. Visitors can see interactive, video and static displays covering three centuries of involvement in signalling, the fight against smuggling and its vital role in safe navigation of distant shores.

SMUGGLING

Renowned for smuggling during the 18th century, discover Deal's history on an independent or guided walk through the old part of town. Middle Street was the centre of Deal's notorious smuggling activities and the smugglers' hiding places were so good they are still being discovered to this day.



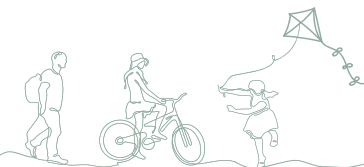
DEAL MUSEUM

See a fascinating collection of local history at Deal Museum. The museum is housed in an old industrial building and includes displays on local domestic and industrial history, a model boat room, plus an exhibition celebrating the history of the Royal Marines in Deal.

DEAL PIER

Deal's present pier was built in 1954. The pier is internationally recognised as an angling venue. In the award-winning building at the end of the pier is Deal Pier Kitchen. This modern café offers an all-day dining menu and supper clubs and was recently featured in The Times top 30 best beach cafes and restaurants.

best kept secrets



Journey into White Cliffs Country's well-preserved past. Venture down into the cliffs to discover their importance throughout history. Travel back in time at Dover Transport Museum, delve into ancient times at the Roman Painted House, or visit Sandwich for a view of Medieval England.

FAN BAY DEEP SHELTER

Take a journey into the past, 70 feet underground, on a guided tour of Fan Bay Deep Shelter in the White Cliffs of Dover.

DOVER TRANSPORT MUSEUM

Just a few miles outside town you will find Dover Transport Museum with displays of over fifty historic road vehicles, from a Penny Farthing bicycle to a double decker bus, many arranged in period street scenes.

KENT MUSIUM OF THE MOVING IMAGE

The museum centres on a collection of cinema and pre-cinema artefacts, with more than 50,000 items in the collection amassed over nearly sixty years.

ST MARTIN LE GRAND

The church was founded in the 7th century and rebuilt after it was believed to have been destroyed by the fire of 1066. View the remaining walls adjacent to Dover Discovery Centre and the Roman Painted House.

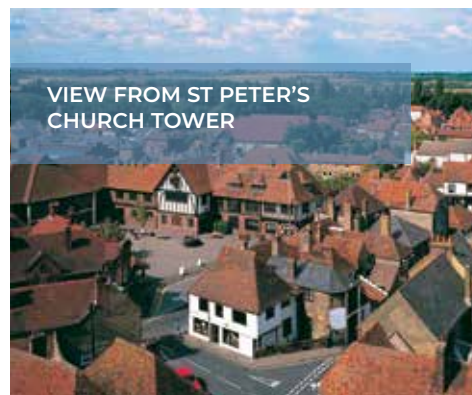
ROMAN PHAROS

Located next to St Mary-in-Castro church within the grounds of Dover Castle is the oldest surviving lighthouse 'Roman Pharos' in the country. The lighthouse was once used by the Romans to aid navigation across the English Channel.

At the Drop Redoubt on Dover's Western Heights are the remains of a second Roman lighthouse.



ROMAN PAINTED HOUSE



VIEW FROM ST PETER'S CHURCH TOWER

MAISON DIEU (Dover Town Hall)

The Maison Dieu, the oldest of the buildings in the Town Hall complex, was founded in the early 13th century by Hubert de Burgh. Built to provide short-term accommodation to pilgrims travelling to and from Europe, the building has seen many changes of use over its 800 years.

ROMAN PAINTED HOUSE

Not far from Dover's town centre is the Roman Painted House. Built cAD 200 it formed part of a large mansio (or official hotel) for travellers crossing the English Channel.

OUR BEAUTIFUL CHURCHES

White Cliffs Country has some wonderful churches. Barfrestone is known for its village church with its Norman architecture and wonderful stone carvings. Other examples of Norman churches can be found at Worth and Eastry.

The stained glass windows in the 14th century church of St James in Staple commemorate the local Plummers and the Ffrench-Blakes, old families of the village.

Probably the smallest church in England, still in regular use, is St Edmund's Chapel in Dover. The Chapel stands on what was once a cemetery and was probably intended for use as a chapel of rest. Over three quarters of the chapel is original and the remainder has been restored using medieval materials.

Dating from Saxon times and situated in the heart of Dover town is St Mary's Church. The church has several beautiful stained glass windows including the Great East Window and The Zeebrugge Window.

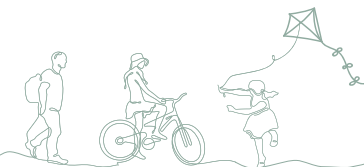
ST PETER'S CHURCH TOWER

In Sandwich at St Peter's Church you can explore the church's centuries-old tower. Take a journey through the ages as you ascend the stairs of the tower and see views across this historic medieval town.

RIDE AND STRIDE

Visit one of the many churches open in the towns and villages throughout White Cliffs Country as part of Ride and Stride. Taking place in September and supported by the National Churches Trust, plan your own route whilst helping raise money for historic churches and chapels.

eating in or out



Indulge in the quintessentially English pursuit of taking afternoon tea or buy locally produced wine to complement locally produced meat. You have a choice from traditional English fare through to continental and world cuisine and, if catering for yourself, locally produced means local!



LOCAL PRODUCE

If, during your stay here, you are looking for places that sell locally produced meat, fruit and vegetables, freshly-caught fish, then you'll find plenty of places in White Cliffs Country. From home-reared beef, lamb and pork to large ranges of fruit and vegetables grown on local farms or why not visit one of the farms where you can pick your own fruit including strawberries, cherries and raspberries? For freshly caught fish head to one of the fishmongers or buy fresh from the boats pulled up onto Deal shingle beach.

Just on the outskirts of Dover is Little Farthingloe Farm, with a farm shop, bakery, traditional butchers and cider

shop. The bakery offers a wide selection of breads, cakes and pastries which are baked through the night by the bakers at Farthingloe. Plus there's a restaurant and café on site.

Try some 'fresh from the farm' real dairy ice cream at Solley's Ice Cream Parlour. You can create your own ice cream sundae from a choice of over 15 flavours!

At Barnsole Vineyard you can take a mini tour and try wine tasting. The vineyard makes English sparkling wine and still red and white wines are sold exclusively from their winery door.

PICNIC ON THE CLIFFS



LOCALLY CAUGHT FISH WITH YOUR CHIPS!



SANDWICH FOOD FAYRE



EATING OUT

Take your pick from a wide range of great places to eat out in White Cliffs Country - you'll be spoilt for choice. Why not try some locally caught fresh fish and other local produce whilst dining in one of our many independent restaurants or local pubs.

Relax and enjoy a traditional English Afternoon Tea in a quirky tearoom or elegant hotel. Who would say no to homemade cakes, scones, clotted cream and jam – all served on the best china, of course!

Don't miss the new Marco Pierre White Chophouse restaurant and Wheeler's Fish & Chips Shop, located at the Best Western Plus Dover Marina Hotel on Dover seafront.

In the heart of Deal is the Frog and Scot, a lively French bistro offering quality ingredients, superbly cooked.

The Rose in Deal is a welcoming bar and restaurant with eight characterful bedrooms upstairs. A former pub with a spirited past, The Rose offers artistic charm and seriously good food.

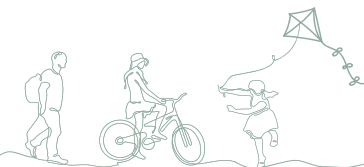
For a traditional stone baked pizza try Pizza GioVANNi, within the Drill Hall in Sandwich, which has a quirky outside feel inside! It is said to have the best gluten free pizzas in town.

For pub food with a difference The Dog at Wingham won the 'Best for Food' title at the 2019 Great British Pub Awards.

FOOD AND DRINK FESTIVALS

Enjoy a mix of food and drinks from the UK and around the world at one of the Food and Drink Festivals in White Cliffs Country. During May in the heart of Sandwich is the annual two-day food fayre with food stalls and street music. Or why not head to the food and drink festival in Deal with a selection of national, international and local food, along with live music, bars, and entertainment making these events something everyone can enjoy.

drink and be merry



From traditional country pubs to chic and trendy wine bars White Cliffs Country offers plenty of places to relax with a drink and maybe a bite to eat.

Traditional ENGLISH PUB FOOD



WATERING HOLES

Originally built in 1365, The White Horse is Dover's oldest pub. Not only worth a visit for its great pub food and real ales. The pub is also famed for its wall, where successful English Channel Swimmers signed their names to record their achievement.

Le Pinardier is a quirky wine bar and shop located in Deal High Street.

Enjoy panoramic views across the English Channel at The Coastguard Pub in St Margaret's Bay, just a stone's throw from the sea and Britain's nearest pub to France.

The George and Dragon located in the medieval town of Sandwich is a 15th century inn serving craft beers.

The Zetland Arms in Kingsdown sits right on the pebble beach looking out on coloured beach huts and magnificent sea views bordered by the White Cliffs.

Located in Dover, Vinoteq is a newly opened wine bar with a live music area in the basement. The intimate cellar venue hosts a wide range of music from cocktail piano to bands of every genre..

The Berry, is a multi-award winning, traditional pub, specialising in serving quality Real Ale, Real Cider and Craft Beer. Located in Walmer, just outside of Deal, many of the ales and ciders are brewed locally in White Cliffs Country.

THE FREED MAN, WALMER DOG FRIENDLY



MERMAID'S LOCKER SANDWICH



THE DOG AT WINGHAM



SANDWICH FOLK & ALE FESTIVAL

Held in the centre of the beautiful town of Sandwich is the annual Sandwich Folk and Ale Festival. The festival has a range of folk music styles with music and dancing in Sandwich pubs and streets.

MICROPUBS

If you want to try somewhere different to the traditional pub or wine bar, there are a number of micropubs across the district. The Thirsty Scarecrow Cider House was Britain's first micro cider house and has a great selection of real ciders from both Kent and further afield.

The fresh and modern Breakwater Brewery and Taproom in Dover produces quality small-batch beers of various styles and hosts a selection of guest brews from UK, European and US craft producers.

For a relaxed environment without television, a juke box, fruit machines or mobile phones head to The Just Reproach in Deal.

The Freed Man is a nautically themed micropub and was previously a post office. Located in Walmer the pub offers a selection of drinks including real ales and cider.

The Mermaid's Locker is a 13th century building in Sandwich offering real ale and cider available from Kent cider makers.

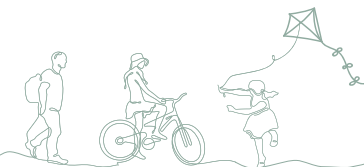
The Smugglers Beer and Music Cafe, Sandwich and Smugglers Records, Deal offer excellent craft beer as well as being great music venues.

In the picturesque village of Barfreestone is The Wrong Turn. This chalet style pub is just 5 minutes' walk from St Nicholas' Church with its Norman architecture and wonderful stone carvings.

BEER FESTIVALS

Head to the annual Beer Festival in May at Crabble Corn Mill or their Cider and Ale Festival in the autumn. Both festivals feature real ales and ciders from all over the country.

Hosted at Dover Town Hall by the Dover, Deal, Sandwich & District branch of CAMRA is the White Cliffs Festival of Winter Ales offering real ales plus a range of ciders.



The entertainment scene of White Cliffs Country is intimate and unique. Go back to cinema's golden age at an original 1930s' picture house. Experience live music at many of our authentic pubs, or soak up some culture at one of our independent theatres.

CINEMAS

Love films? Catch a movie, but do something different - settle down with a classic at an Art Deco picture house; check out the latest release at a state-of-the-art multiplex, or relive the 1950s at a drive-in cinema. White Cliffs Country has it all!

THEATRES, CONCERTS & SHOWS

With a range of independent theatres and music venues you'll be kept entertained whilst in White Cliffs Country. Based in the old railway station The Booking Hall, in Dover, hosts live music and community events.

The Astor Community Theatre, Deal, has a year-round programme of live music performances, theatre productions and films.

The Roundhouse Theatre hosts a range of theatre performances by local groups.

The Lighthouse in Walmer showcases local bands and international live music.



FESTIVALS

FESTIVALS

With a packed programme of events and festivals taking place throughout the year, there's plenty of local colour to enjoy in White Cliffs Country!

Visit the medieval town of Sandwich during the popular Sandwich Festival for a three-day extravaganza of outdoor entertainment. Popular features of the festival have included live music, dancing, parades, a concert, picnic by the quayside, Italian market, classic car show and the much-loved Rotary Duck Race.

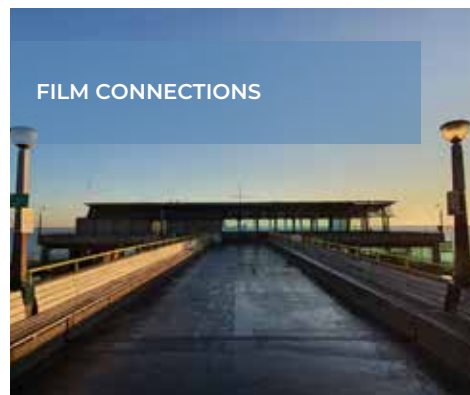
International and national artists perform at venues across White Cliffs Country during Deal's Festival of Music and the Arts, a fortnight that celebrates the performing arts showcasing everything from street music to opera.

Get your walking boots on for the White Cliffs Walking Festival. This popular annual event, which spans seven days, boasts everything from short walks exploring the history of our towns to longer hikes taking in the tranquility of our beautiful countryside.

The Regattas of White Cliffs Country are fantastic fun for all the family. The Port of Dover's Community Regatta is a fabulous festival on land on sea, while Deal's Regatta Week features a seafront raft race and lorry pull in the town centre. You might even get roped in!



DOVER REGATTA

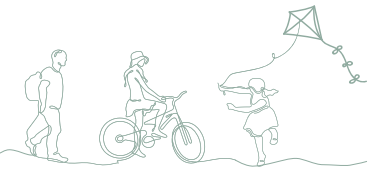


FILM CONNECTIONS

FILM & LITERARY CONNECTIONS

With our stunning clifftops, beaches and charming town and villages, White Cliffs Country has inspired many famous writers throughout the centuries. Stand in the footsteps of the whimsical authors to see what inspired them, and maybe put pen to paper yourself!

This stunning location has often been used in many film and TV series including the Disney production 'Into the Woods', Sky Atlantic drama 'The Tunnel' and more recently the hit ITV thriller 'Liar'.



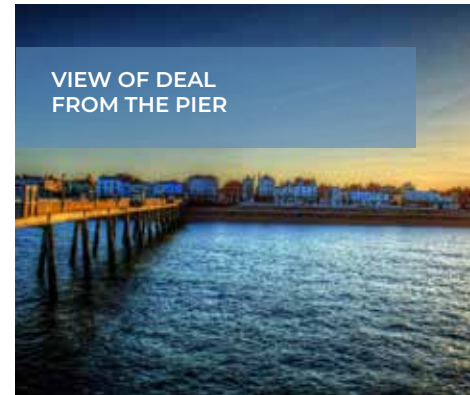
Deal has repeatedly been cited as one of the most desirable places to live in the UK and it's easy to understand why. One of the prettiest seaside towns in Kent, it's a tiny but terrific hidden gem. Deal is stunningly photogenic too, making this an Instagram-worthy hotspot.

A former smuggling haunt, Deal boasts a town centre full of character, where cosy fishermen's cottages rub shoulders with well-preserved Georgian town houses. Feed your imagination as you wander through winding streets and alleyways – and make it a must-do to meander along Middle Street!

Deal's quaint promenade overlooks a pebble beach offering panoramic views of

the Channel, while the pier (the town's third) is a local landmark you can't miss. Stretching 1000 feet into the sea, it is home to Deal Pier Kitchen, which has featured in The Times' top 30 best beach cafes and restaurants in the UK and serves locally-sourced delicacies from an award-winning building. The seafront tableau with which you are presented from the end of the pier has remained unspoiled for more than 100 years.

Deal enjoys a thriving arts scene, with plenty of galleries, exhibitions, festivals and museums to enjoy. There's also a wide selection of quirky, independent stores and antique shops to browse. Deal Braderie, the town's annual street market, is hugely



popular. Here, you'll find stalls selling vintage clothing, jewellery, crafts, bric-a-brac, memorabilia, books, and antiques. And if all that shopping whets your appetite, there's a thriving foodie scene to sample. As you'd expect, fresh, locally-caught seafood's a speciality!

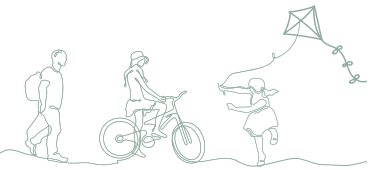
If you're a history buff, you should head out of town to Deal Castle. Built by the order of King Henry VIII, you'll discover it's one of the finest Tudor artillery castles in England.

No trip to White Cliffs Country would be complete without a visit to Deal, so make sure it's on your itinerary.

**YOUR A TO Z OF DEAL
ATTRACTIONS AND EXPERIENCES**
There's so much to see, do and explore in White Cliffs Country – how many adventures can you chalk up?

- Betteshanger Park
- Brooklyn Greenspa
- Chequers Kitchen Cookery School
- Cocktail-making at The Lane
- Cornilo Riding
- Cottington Lakes
- Deal Castle
- Deal Memorial Bandstand
- Deal Museum
- Deal Pier
- Deal Town Centre
- Deal, Walmer & Kingsdown Beach
- DONT WALK WALK Gallery
- Jewellery making at Rees & Rees
- Joanne Harmer Gallery
- Julius Caesar's First Landing in Britain (Memorial Plaque)
- Kent Museum of Moving Image
- Linden Hall Studio (Art Gallery)
- Middle Street Conservation Area
- Mike's Bikes (Cycle Hire)
- Pier View Amusements
- Royal Cinque Ports Golf Club
- Sandown Castle Community Garden
- Seaward Gallery
- Solley's Ice cream Parlour & Farm
- Taylor-Jones & Son Gallery
- The Astor Theatre
- The History Project
- The Landmark Centre
- The White House
- The Wild Kitchen (Forage & Feast)
- Tides Leisure & Indoor Tennis Centre
- Timeball Tower Museum
- Walmer & Kingsdown Golf Club
- Walmer Castle & Gardens
- Walmer Lifeboat Station
- Walmer Paddling Pool
- Will & Yates Gallery

Dover



An active, adventurous and authentic English historic town.

White Cliffs Country takes its name from Dover's iconic chalk coastline - and you wouldn't want to visit the town without hiking along the world-famous clifftops, taking in fresh sea air and wondering which breathtaking view to snap and share first.

Dover boasts a wealth of coastal and countryside routes to explore and is proud to have been awarded the Walkers Are Welcome status. Whichever time of year you visit, you'll find opportunities abound for adventures outdoors - did we mention we have a continental climate?

For a truly energetic experience, head to the waterfront and immerse yourself in a wide selection of water sports - like an exhilarating Sea Safari, perhaps - or slow the

pace by the seafront and watch the ships sail past, from the award-winning Tonkin Liu esplanade.

A striking landmark on South East England's coastline, and perched high on the hillside overlooking the town, Dover Castle has, for centuries, weathered the storms of time and holds the key to unlocking the historical narrative of this unique area. Dover has been a significant port since Roman times and with France just twenty miles across the water, the town has played many a crucial defensive role. Uncover the story of Dover's past by following the heritage trail and absorb yourself in the compelling stories of the forts, museums and ancient sites of this fascinating town.



DOVER MUSEUM



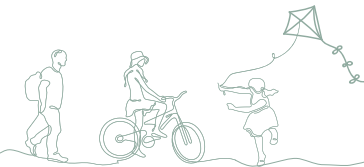
DOVER MARINA

Dover's impressive White Cliffs and formidable castle are unmistakable from miles away and form an integral part of the town's identity. But Dover is also a treasure trove of hidden gems awaiting your discovery. Perhaps you'll paddle in the bay where Noel Coward once lived and entertained Hollywood stars who'd swim from the shore. You might see the cliffs from a different angle - venturing underground to the deep shelter or descending the Grand Shaft. Sample a delicious craft ale or photograph the rare chalk grassland wildflower. Whatever you decide to do while you're here, you can tread your own path and make memories you'll want to share again and again - before you book to come back, of course...

**YOUR A TO Z OF DOVER
ATTRACTIONS AND EXPERIENCES**
There's so much to see, do and explore in White Cliffs Country - how many adventures can you chalk up?

- Admiralty Pier
- Bleriot Memorial
- Breakwater Brewery
- ChalkUp21 Art & Architecture Trail
- Coker Sea Fishing Charters
- Connaught Park
- Crabble Corn Mill
- De Bradelei Wharf Shopping Outlet
- Dover Athletic Football Club
- Dover Beach
- Dover Castle & The Secret Wartime Tunnels
- Dover District Leisure Centre
- Dover Marina
- Dover Museum & Bronze Age Boat Gallery
- Dover Sea Safari
- Dover Sea Sports Centre
- Dover Transport Museum
- Drop Redoubt
- Fan Bay Deep Shelter
- Fort Burgoyne
- Get Lost Escape Rooms
- Grand Shaft
- Kearsney Parks
- Maison Dieu (Dover Town Hall)
- Marina Pier
- Shakespeare Cliff Beach
- Silver Screen Cinema - Dover
- St Edmund's Chapel
- St James Retail & Leisure Park
- St Mary's Church
- The Booking Hall
- The Roman Painted House
- The Roundhouse Theatre
- Waterfront Spa & Health Club
- Western Heights
- Whinless Down Nature Reserve
- White Cliffs of Dover

Sandwich



A relaxed, romantic and rustic English medieval town

For a quirky mini-break in White Cliffs Country, soak up the romantic charm of Sandwich, a rustic Kentish beauty spot with prestigious medieval origins. Tour the historical centre and discover perfectly preserved ancient architecture.

Cruise from the quayside for a marine wildlife encounter, or board a Cold War-era gunboat boasting Hollywood connections. Browse bespoke shops for curios; dine in style, then feed your wellbeing with a leisurely stroll or rejuvenating bike ride through picturesque parkland. Charge your camera, bring your sketchbook – quaint, unspoilt Sandwich inspires everyone's inner artist!

Stimulate your senses and meet exotic creatures up close at Sandwich Wildlife Park – or indulge your inner historian with a guided tour of the town. Make sure to include a visit to the Guildhall Museum, home to Sandwich's very own Magna Carta!

Sandwich was one of the famous Cinque Ports, which were grouped together by Edward the Confessor, for defence purposes. In fact, its street plan hasn't changed much at all since the Domesday Book was commissioned. A river tour to Richborough Roman Fort & Amphitheatre is also highly recommended. It is perhaps the most symbolically important of all Roman sites in Britain... did you know,



SANDWICH GUILDHALL MUSEUM



MEDIEVAL CENTRE

Richborough witnessed both the beginning, and almost the end, of Roman rule?

It might not have been popular in ancient times, but golf is very much the name of the game in Sandwich today. The town is home to two Championship courses, with many more nearby. Prince's Golf Club is a must for all links lovers, while Royal St George's is the number one course in England. – it's set to host The Open Championship in 2021.

Sandwich is more than a bite-sized adventure... with so much to discover and explore, you won't want to rush home. Relax overnight here and feel refreshed for tomorrow, ready to enjoy more of the magic of White Cliffs Country.

YOUR A TO Z OF SANDWICH ATTRACTIONS AND EXPERIENCES

There's so much to see, do and explore in White Cliffs Country – how many adventures can you chalk up?

- Ancient Highway
- Barnsole Vineyard
- Chillenden Mill
- Cycle Route 1
- Empire Cinema – Sandwich
- Felderland Farm – Pick Your Own
- Fisher Gate
- Gazen Salts Nature Reserve
- Goodnestone Park Gardens
- Monks' Wall Nature Reserve
- Prince's Golf Club
- Richborough Roman Fort & Amphitheatre
- Rope Walk
- Royal St George's Golf Club
- Sandwich Bay
- Sandwich Bay Bird Observatory & Field Centre
- Sandwich Guildhall Museum
- Sandwich Historic Town Trail
- Sandwich Leisure Centre
- Sandwich Local History Society Tours
- Sandwich Market Square
- Sandwich Medieval Centre
- Sandwich River Bus & Seal Spotting Trips
- Sandwich Town Centre
- Sandwich Wildlife Park
- Saxon Shoreway Path
- St Mary's Arts Centre
- St Peter's Church & Haven Heights
- The Barbican & Toll Bridge
- The Hunt Gallery
- The Quay
- U.S.N. P22 Gunboat
- White Mill Rural Heritage Centre
- Wingham Wildlife Park



VISITOR INFORMATION CENTRES

Making the most of your visit to White Cliffs Country

WHITE CLIFFS COUNTRY

Visitor Information Centre
Dover Museum, Market Square,
Dover, Kent, CT16 1PH
T: 01304 201066
E: vic@dover.gov.uk
W: www.whitecliffscountry.org.uk

DEAL

Visitor Information Centre
Town Hall, High Street,
Deal, Kent, CT14 6TR
T: 01304 369576
E: info@deal.gov.uk

SANDWICH

Visitor Information Centre
Guildhall, Cattle Market,
Sandwich, Kent, CT13 9AH
T: 01304 617197
E: tourism@sandwichtowncouncil.gov.uk



how to get here



Within easy access from London and Europe White Cliffs Country is effortless to reach and perfect for a short or long break. The High Speed Rail Link makes us only 67 minutes from London on the train! France is only 75 minutes on a Cross Channel ferry or 35 minutes by Eurotunnel. The M20 and M2 motorways link us to rest of the country. Dover, Deal, Sandwich and our countryside are serviced by regular trains and buses both locally and to and from London.

BY RAIL:

The High Speed Train operates from London St Pancras to Dover, Deal and Sandwich. South Eastern operates services from London Charing Cross and London Victoria to Dover, Deal and Sandwich. National Rail Enquiries 03457 48 49 50 www.nationalrail.co.uk Continental train connections can be made at London St Pancras and Ashford International. Eurostar 03432 186 186

BY COACH:

National Express operates a regular direct link from London to Dover and Deal. For times, fares and information: National Express 08717 818181 www.nationalexpress.com

BY LOCAL BUS:

Detailed times of all local bus services are available from Stagecoach Buses. Stagecoach 0871 200 2233 www.stagecoachbus.com

BY BIKE OR FOOT:

There is an extensive network of walking routes and cycling routes throughout White Cliffs Country. For full details visit our website: www.whitecliffscountry.org.uk

BY CAR OR MOTORBIKE:

Both the M20 and M2 connect directly to White Cliffs Country.

CROSS CHANNEL TRAVEL:

Ferry and train crossings between Dover to Calais and Dunkirk operate on a regular basis throughout the day. P&O Ferries 0800 130 0030 DFDS Seaways 0871 574 7235 Eurotunnel 08443 353535

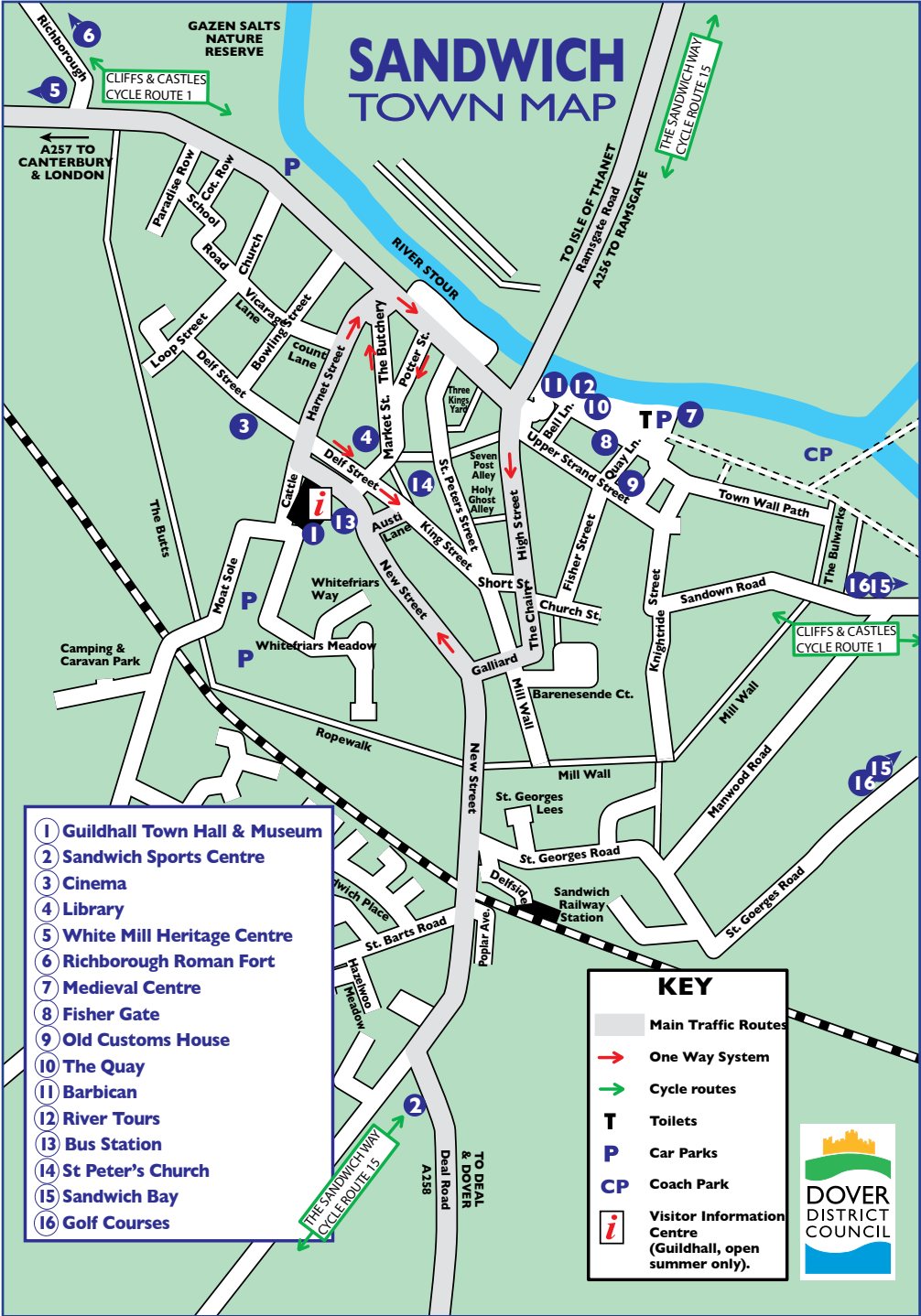




Derived from out of copyright Ordnance Survey mapping and updated from original sources. © Dover District Council 2018



Derived from out of copyright Ordnance Survey mapping and updated from original sources. © Dover District Council 2018



Derived from out of copyright Ordnance Survey mapping and updated from original sources. © Dover District Council 2018



Derived from out of copyright Ordnance Survey mapping and updated from original sources. © Dover District Council 2020

Other publications you may be interested in.
These are available online or from our VIC outlets.



FOR FURTHER INFORMATION
T: 01304 201066
E: vic@dover.gov.uk
W: www.whitecliffscountry.org.uk

All details within this publication were correct at the time of going to print, December 2020, but may be subject to change. Please check with the website www.whitecliffscountry.org.uk for any updates.